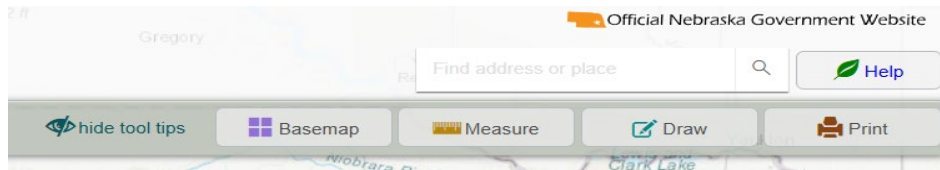


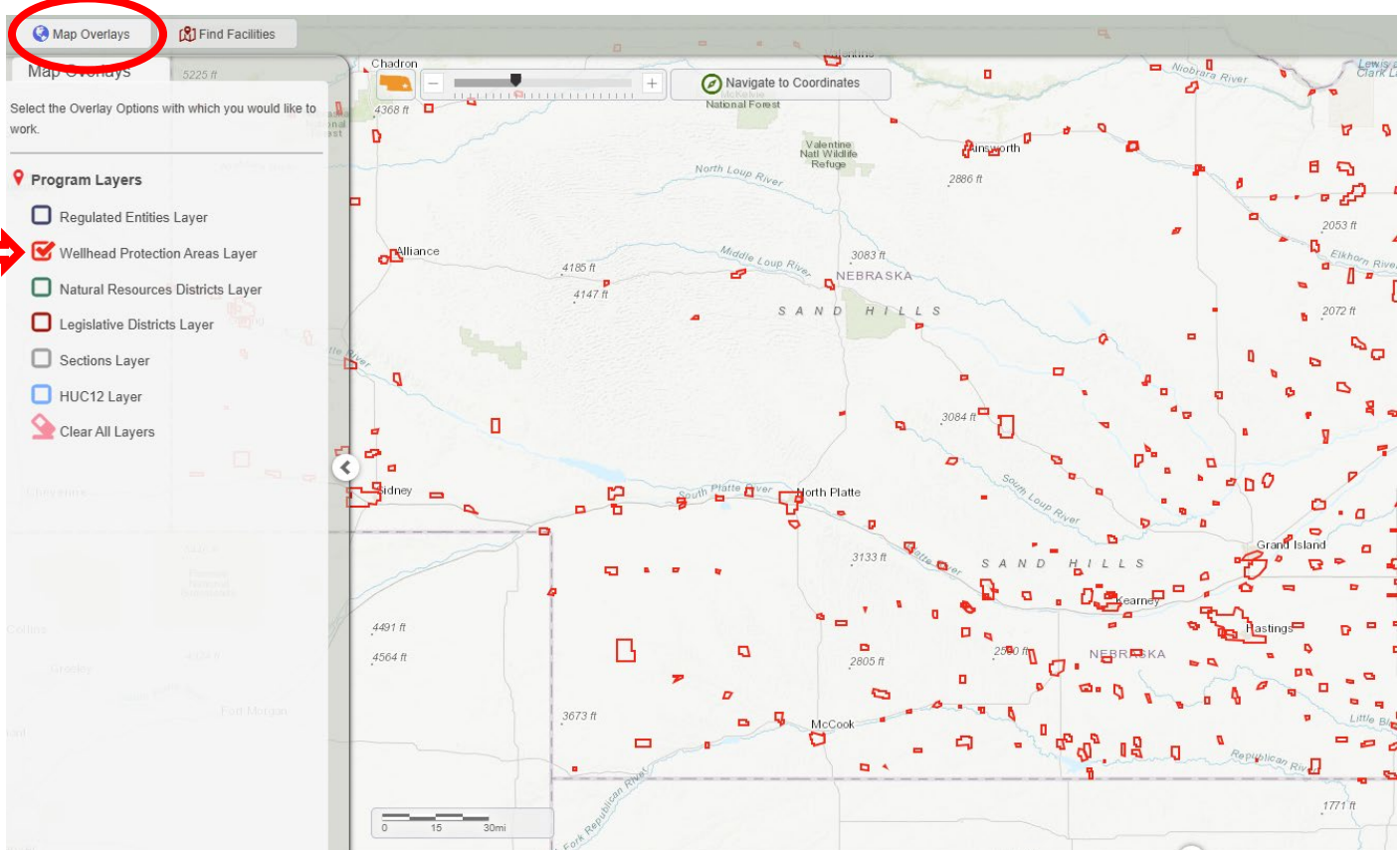
NDEE Interactive Mapping System

Wellhead Protection Area [Interactive Mapping System Website](#)

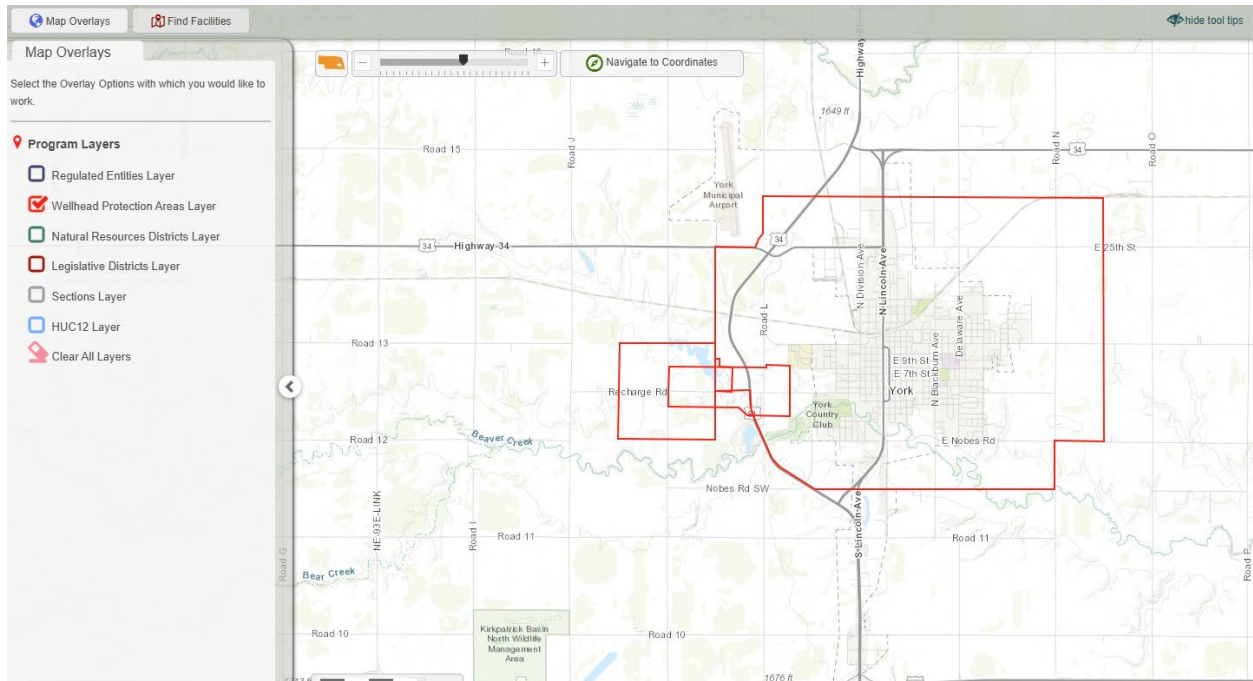
1. Open the NDEE Interactive Mapper. Enter an address or place in the search bar at the top right-hand corner.



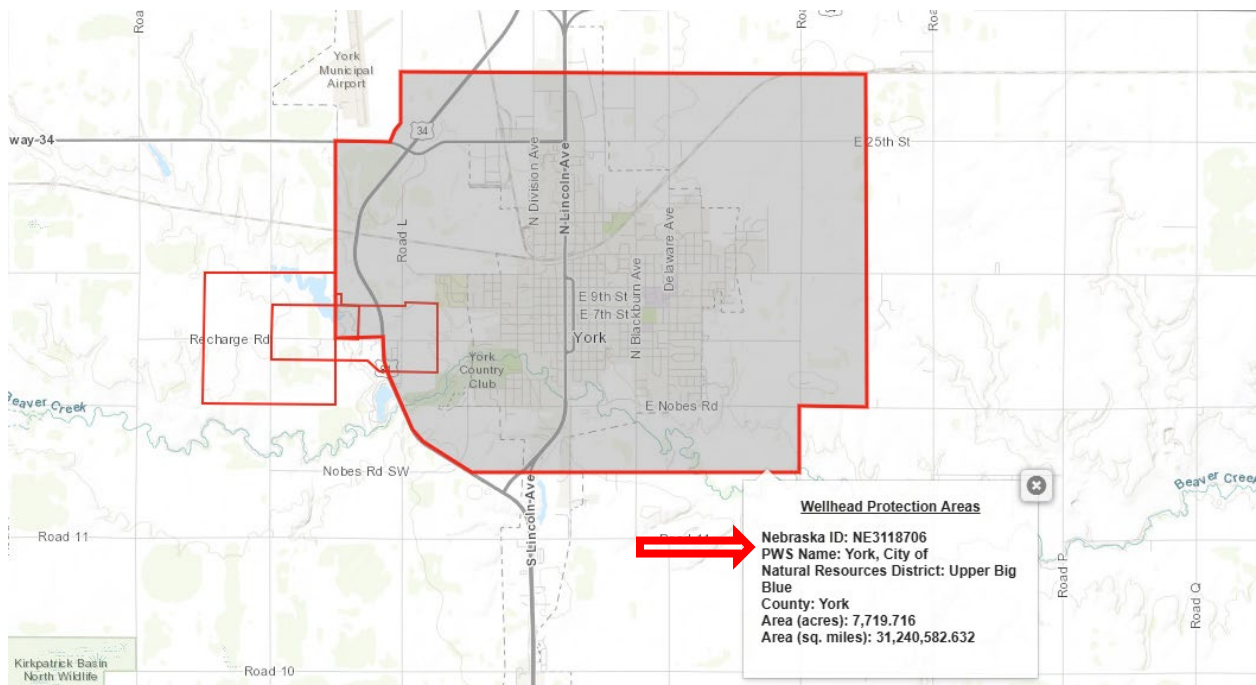
2. While zoomed in on your project location, select the **Map Overlays** tool from the left-hand side of the map, then check the **Wellhead Protection Areas Layer** tab.



3. Any Wellhead Protection Areas will be outlined in red.



4. Clicking on the Wellhead layers in the map will create a pop-up with information on the Wellhead Protection Area, including the Wellhead Protection Area ID and Name.



Please note that links were current as of the date of public posting of this document, but may have changed.

Neither the State of Nebraska, the Nebraska Broadband Office, any employee or officer of either entity, nor any consultants working on their behalf, makes any representation or warranty regarding the accuracy or completeness of the information contained herein. It is the sole responsibility of applicant to comply with all requirements of the Nebraska Broadband Equity, Access, and Deployment (NBEAD) Program, including, but not limited to, compliance with applicable laws and regulations. Any applicant or party relying on this guidance should conduct their own research and hire their own professional consultants, advisers, and attorneys.